

ERECTION DIAGRAM
 USE 3/4" ϕ M. BOLTS @ DIAPHRAGMS
 USE 7/8" ϕ H.S. BOLTS ELSEWHERE

NOTE:
 HOLES FOR FLEMING BRACKETS TO BE FILLED WITH
 3/8" ϕ CARBIDE BOLTS WITH BUTTON HEADS ON
 OUTSIDE OF BEAM.

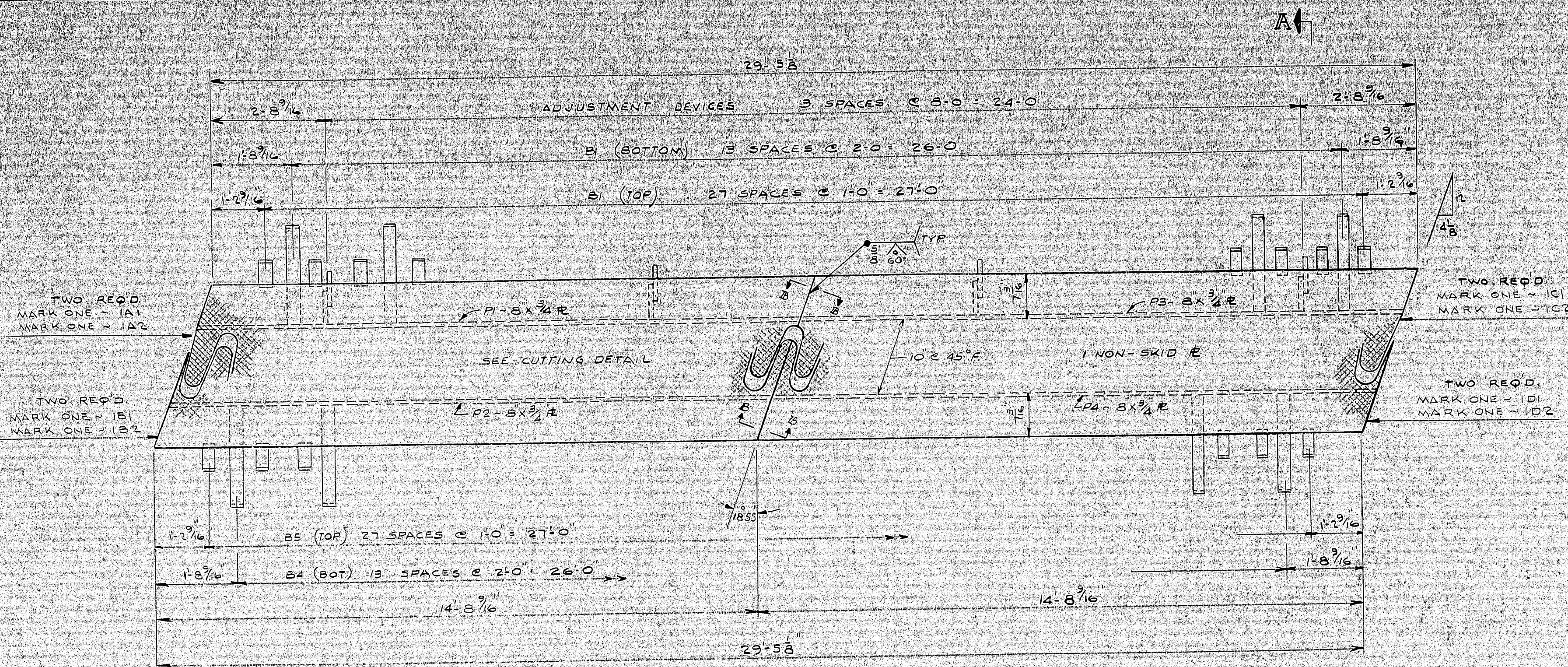
FINAL

DATE APPROVED 2-16-67

APPA.	2-3-67
SHOP	2-17-67
E.F.O.	2-17-67
DRAWN	SPH 1-30-67
REVISION	
REVISION	
REVISION	

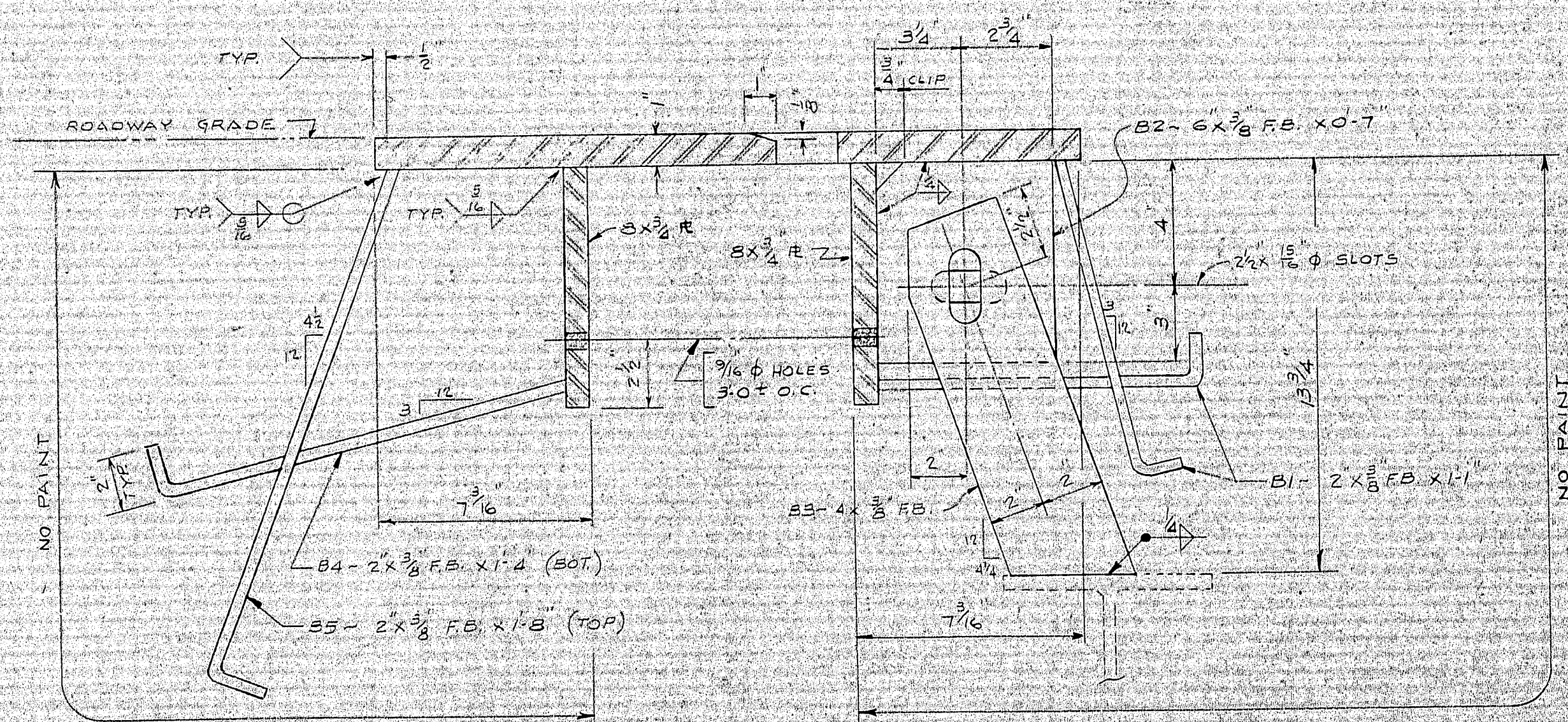
ERECTION DIAGRAM	
MEGQUIER & JONES CORP 33 PEARL ST PORTLAND, MAINE	
BRIDGE RT. 159 - OVER I-95 ISLAND FALLS, MAINE	
CUSTOMER	CALLAHAN BROTHERS, INC.
ARCHITECT	MAINE STATE HIGHWAY COMM.
ORDER NO.	J-4283
DWG. NO.	E1

113:39

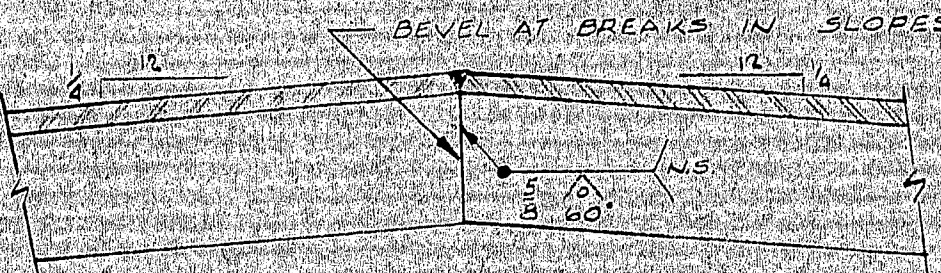


NOTE:
SECTIONS MARKED 1A1 TO BE
MATCHED WITH SECTION 1B1, ETC.

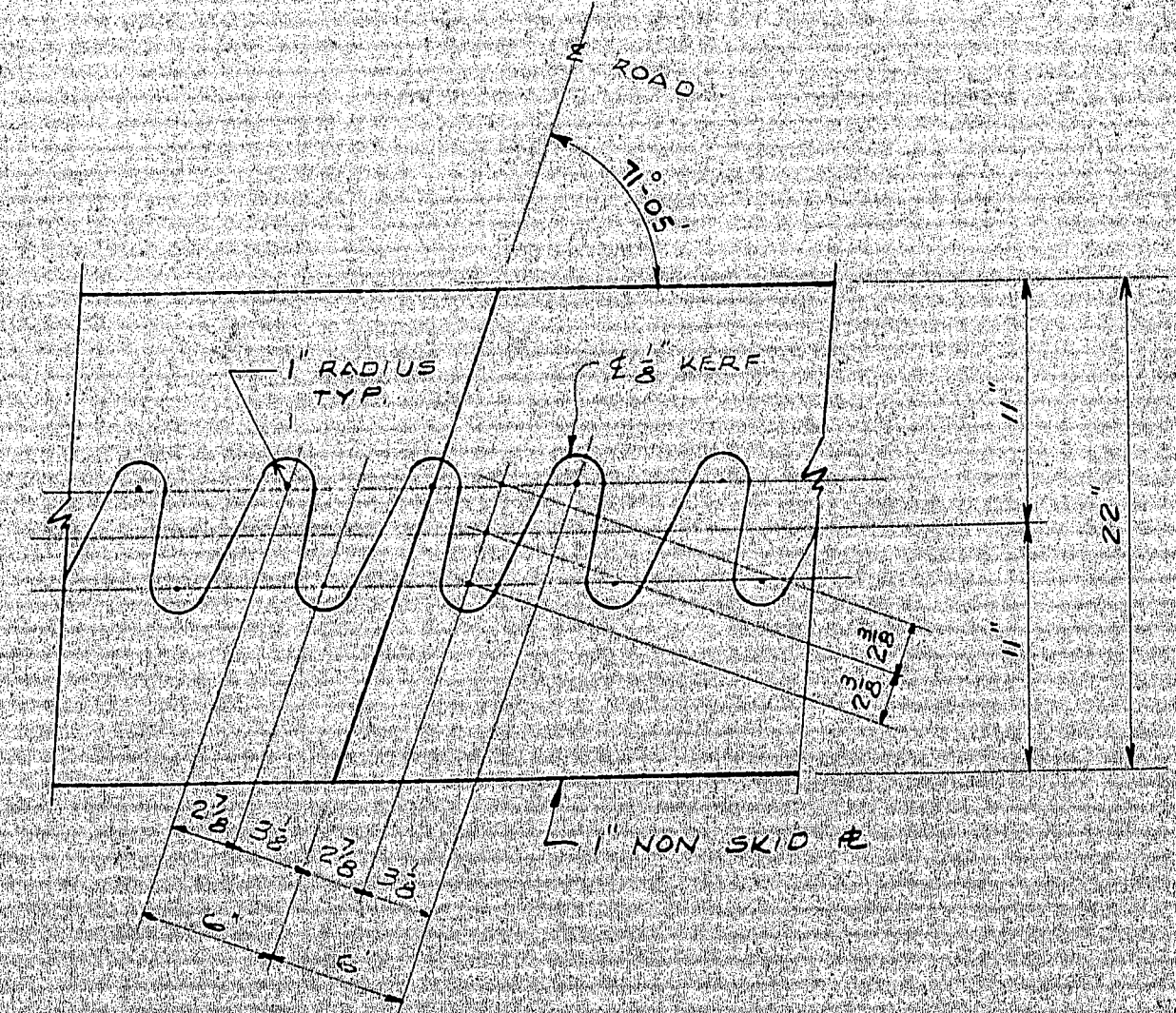
TWO ASSEMBLIES REQ'D.
ALL A36 STEEL



SECTION AA
AFTER ADJUSTMENT DEVICE IS IN
FINAL POSITION, WELD BARS B2
TO B3 WITH 1/4" FILLET WELD



SECTION BB



CUTTING DETAIL
CUT FROM ONE R AND MATCH MARK

SHIP BILL OF MATERIAL						JOB NO. J-4283	DWG. NO. 1
MARK	NO.	MARK	SHAPE	LENGTH	WT.	REMARKS	
1A1	1		NON SKID			CUT FROM 22" X 15" 6"	
1A2	1		do			do	
1B1	1		do			do	
1B2	1		do			do	
1D1	1		do			do	
1D2	1		do			do	
2	P1		8x3/4 #	4	8 1/2		
2	P2		do	14	8 1/2		
2	P3		do	14	8 1/2		
2	P4		do	14	8 1/2		
84	B1		2x3/8 F.B.	1	1		
8	B2		6x3/8 F.B.	7			
8	B3		4x3/8 F.B.	1	2 1/2	SHIP BOLTED TO B2	
28	B4		2x3/8 F.B.	1	4		
36	B5		do	1	8		
B	-		1/8" H.S.B.	24		HVV SEMI-FIN HEX BOLTS & NUTS	
B	-		1/8" W.S.H.				

PAINT NOTE: (ACCORDING TO S.H.C. SPECS
EXCEPT AS FOLLOWS)
SHOT BLAST AND PAINT WITH RED LEAD
AS PER S.H.C. SPECS
ALL WELDED AREAS TO BE NEUTRALIZED
WITH CHEMICALS PRIOR TO PAINTING, AND
RINSED WITH WATER.
MACHINE FINISHED SURFACES SHALL BE
COATED WITH A HOT MIXTURE OF WHITE
LEAD AND TALLOW, EXCEPT FOR ASA 250
SURFACES WHICH SHALL BE PAINTED
ALL PIECE MARKS SHALL HAVE A
PRIME COAT UNDER THEM.

HOLES: AS NOTED
FIELD CONN.
PAINT: SEE NOTE ABOVE.

ROADWAY EXPANSION DAM

MEGQUIER & JONES CORP
33 PEARL ST PORTLAND, MAINE

BRIDGE RT 159 OVER - I-95
ISLAND FALLS, MAINE

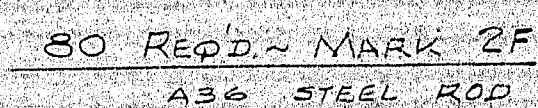
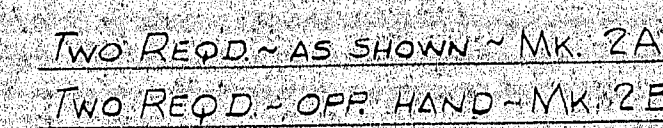
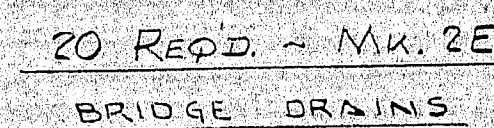
CUSTOMER: CALLAHAN BROTHERS
ARCHITECT: MAINE STATE HIGHWAY COMM

ORDER NO. J-4283 DWG. NO. 1

FINAL

DATE	APPROVED	1-6-67
APPR		1-3-67
SHOP		1-9-67
REV		2-17-67
DRAWN	SPH	12-21-66
REVISION		
REVISION		

113'40



HOLES:
FIELD CONN:
PAINT: SEE DWG.

CURB AND SIDEWALK EXP. DAM, SWEDGE
BRIDGE DRAINS BOLTS

MEGQUIER & JONES CORP.
33 PEARL ST. PORTLAND, MAINE

BRIDGE RT. 159 OVER - I-95
ISLAND FALLS, MAINE

CUSTOMER CALLAHAN, BROTHE

ARCHITECT MAINE STATE HIGHWAY COMM

FORM NO. 1-4283 DWG NO. 2

DATE APPROVED 1-6-67

APPR		1-3-6
------	--	-------

SHOP		1-9-6
------	--	-------

DRAWN	SPH	12-22
-------	-----	-------

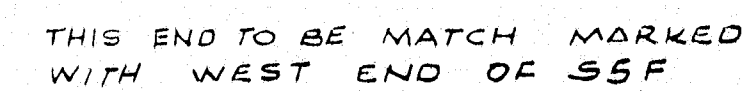
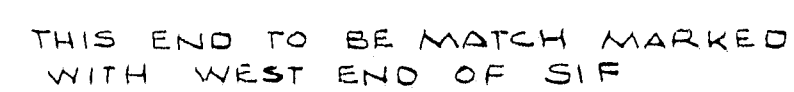
REVISION		
----------	--	--

REVISION		
REVISION		

Figure 1

113.4

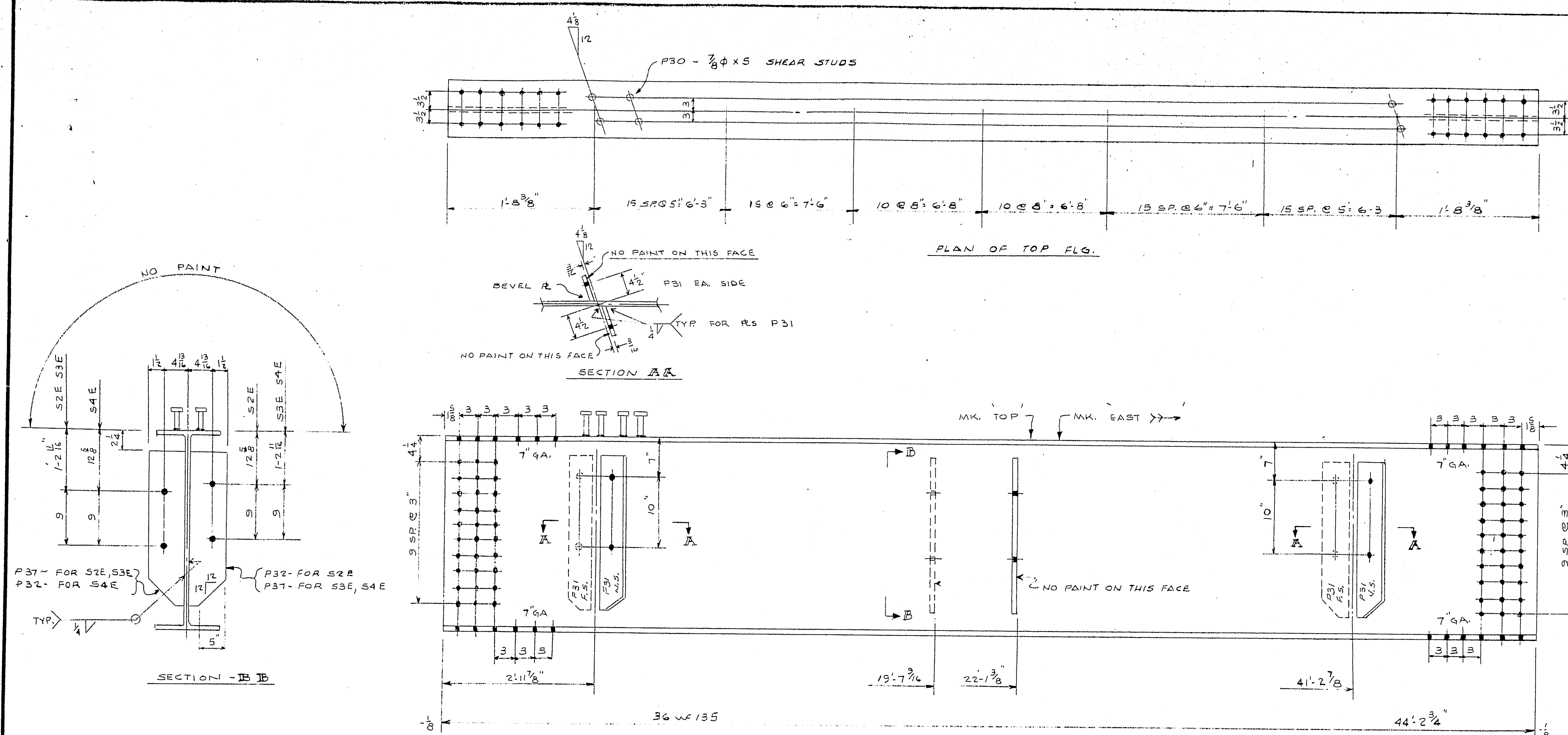
113 42



DWG. NO. 10

REVISION		
----------	--	--

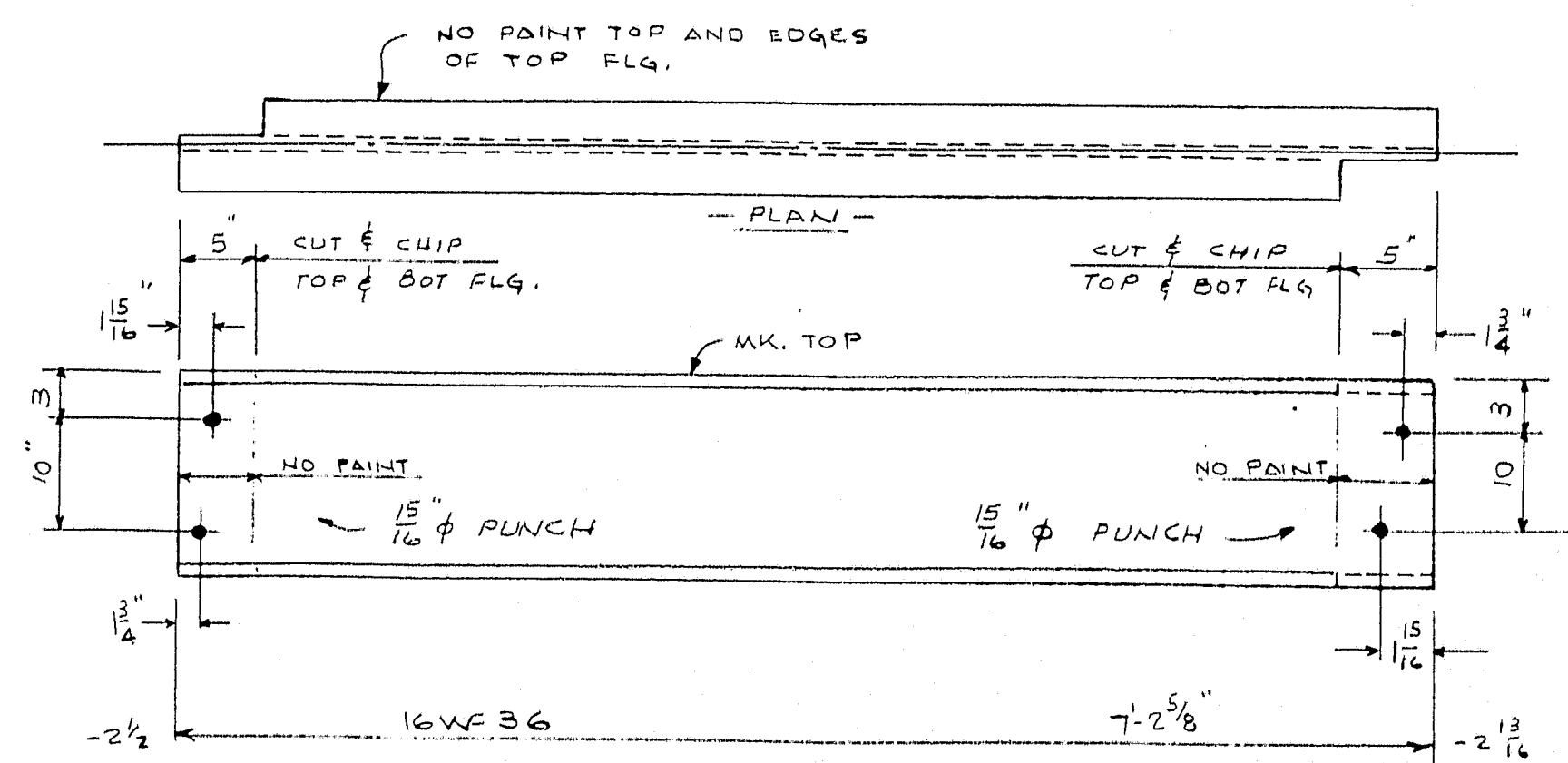
113:49



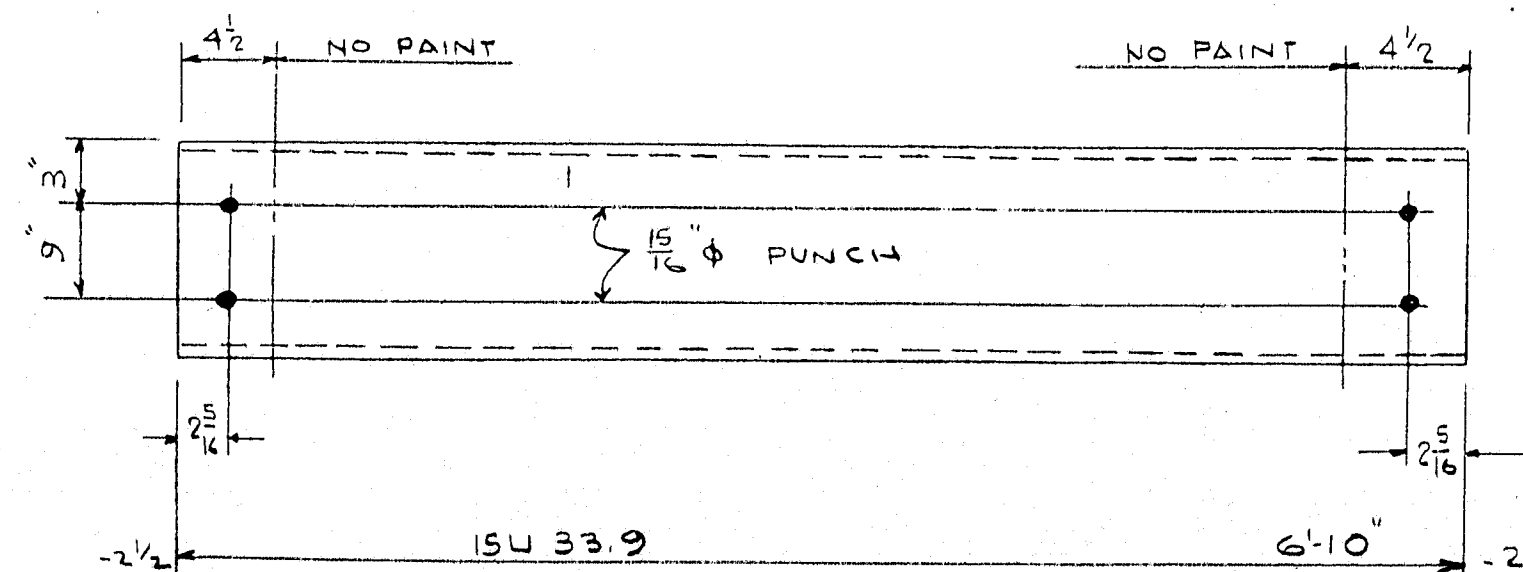
THIS END OF S2E MATCH MARKED W/ EAST END OF S2D
 " S3E " " S3D
 " S4E " " S4D

ONE REQ'D. ~ MK. S2E
 ONE REQ'D. ~ MK. S3E
 ONE REQ'D. ~ MK. S4E
 ALL MATERIAL A36 STEEL

THIS END OF S2E MATCH MARKED W/ WEST END OF S2F
 " S3E " " S3F
 " S4E " " S4F



48 REQ'D. ~ MK. 11A
 A36 STEEL



44 REQ'D. ~ MK. 11B
 A36 STEEL

SHIP		BILL OF MATERIAL			JOB NO. J-4283		DWG. NO. 11	
MARK	NO.	MARK	SHAPE	LENGTH	WT.	REMARKS		
S2E	1		36 WF 135	44	2 ³ / ₄			
S3E	1		do	44	2 ³ / ₄			
S4E	1		do	44	2 ³ / ₄			

FINAL

HOLES: SUBPUNCH 1/16" P REAMED TO 1/8" (EXCEPT AS NOTED)
 FIELD CONN: 7/8" H.S.B. & 3/4" M.B.
 PAINT: SEE DWG. "1"

BRIDGE BEAMS & DIAPHRAGM BEAMS

MEGQUIER & JONES CORP.
 33 PEARL ST. PORTLAND, MAINE

BRIDGE AT 159 OVER I-95
 ISLAND FALLS, MAINE

CUSTOMER CALLAHAN BROTHERS, INC.
 ARCHITECT MAINE STATE HIGHWAY COMM.

ORDER NO. J-4283 DWG. NO. 11

DATE APPROVED 2-16-67	
APPR.	2-3-67
SHOP	2-17-67
F.F.O.	2-17-67
DRAWN	SPH 1-30-67
REVISION	
REVISION	

113:50